



guides catholiques de belgique



Guide des uniformes GCB •



NAMUR

Badgé
de Région

Cie SAINTE-CATHERINE
21^e UNITE VAL NOTRE DAME

Bande
d'Unité



Badgé
Belgique

Badgé
Nuton

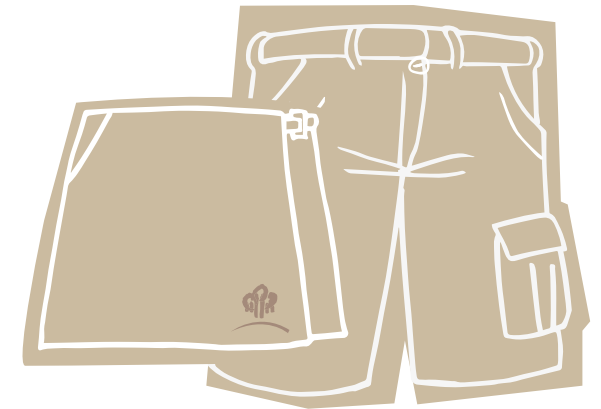


Pull bleu marine

**Foulard
d'Unité**



Polo bleu clair



Jupe, jupe-short ou short beige



Nutons

5 - 7 ans



Ciê SAINTE-CATHERINE
21^e UNITÉ VAL NOTRE DAME

Bande
d'Unité



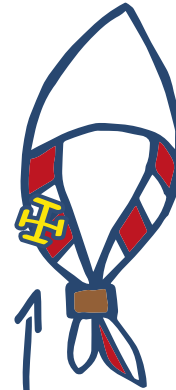
Badgé
Belgique

Badgé
Lutin



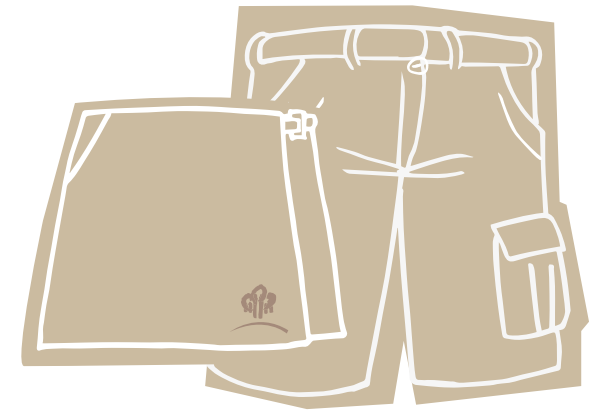
Pull bleu marine

**Foulard
d'Unité**



Croix
Lutin

Polo rouge



Jupe, jupe-short ou short beige



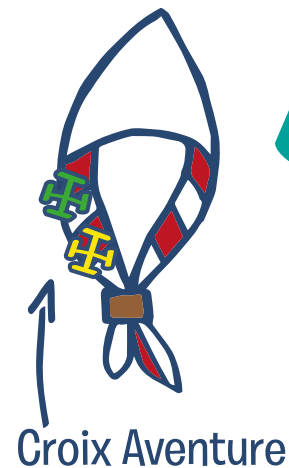
Lutins

7 - 11 ans



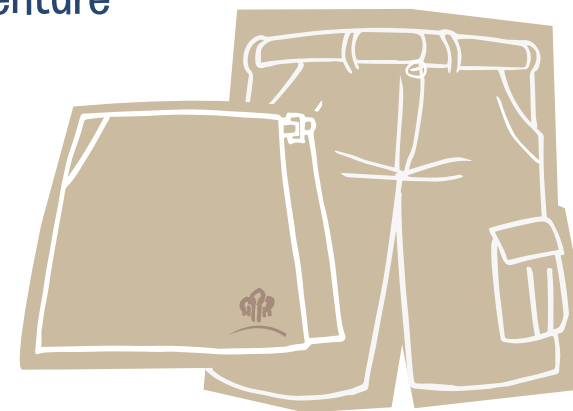
Chemise bleu marine

Foulard d'Unité



Croix Aventure

Polo vert



Jupe, jupe-short ou short beige



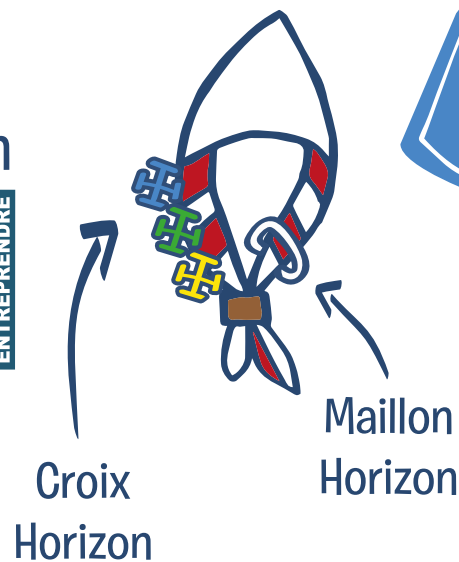
Aventures

11 - 15 ans



Chemise bleu marine

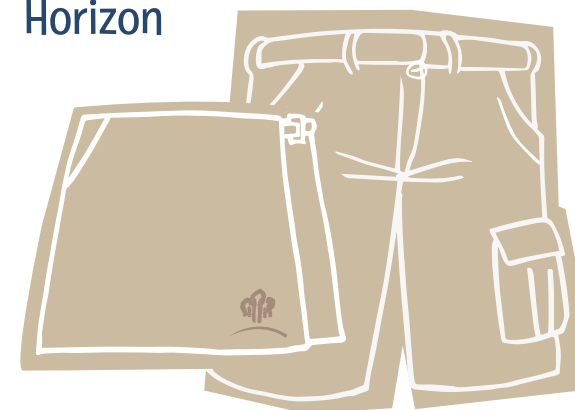
Foulard d'Unité



Polo bleu nattier



Maillon Horizon



Jupe, jupe-short ou short beige



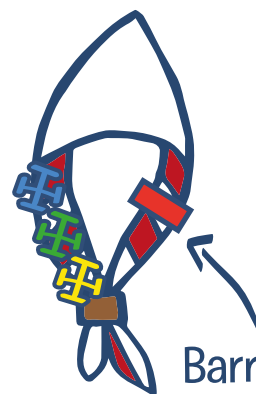
Horizons

15 - 17 ans



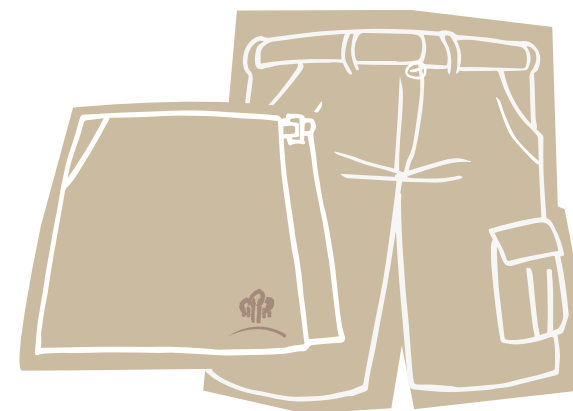
Chemise bleu marine

Foulard d'Unité



Barrette Routier

Polo orange



Jupe, jupe-short ou short beige



Routes

17 ans & +



NAMUR

Badge de Région

Cie SAINTE-CATHERINE
21^e UNITE VAL NOTRE DAME

Bande d'Unité



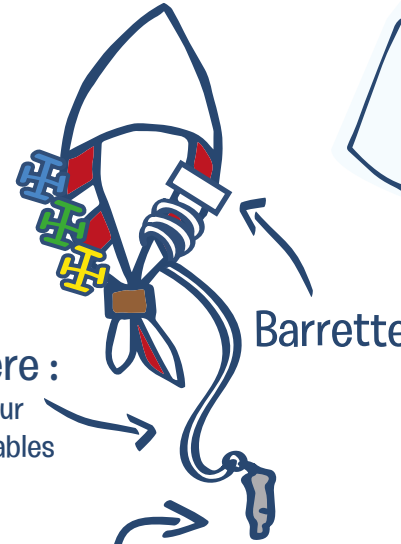
Badge Belgique

Floche

Le badge de Branche

Foulard d'Unité

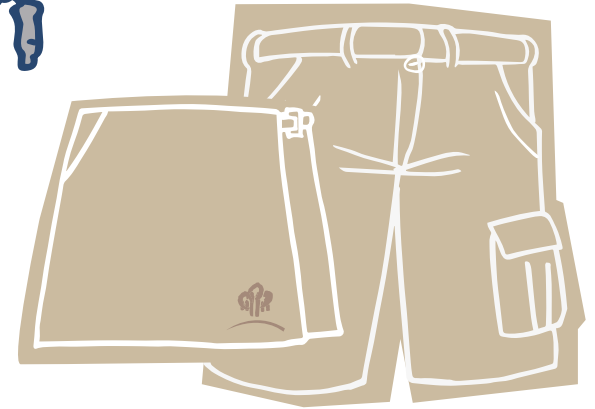
Polo blanc



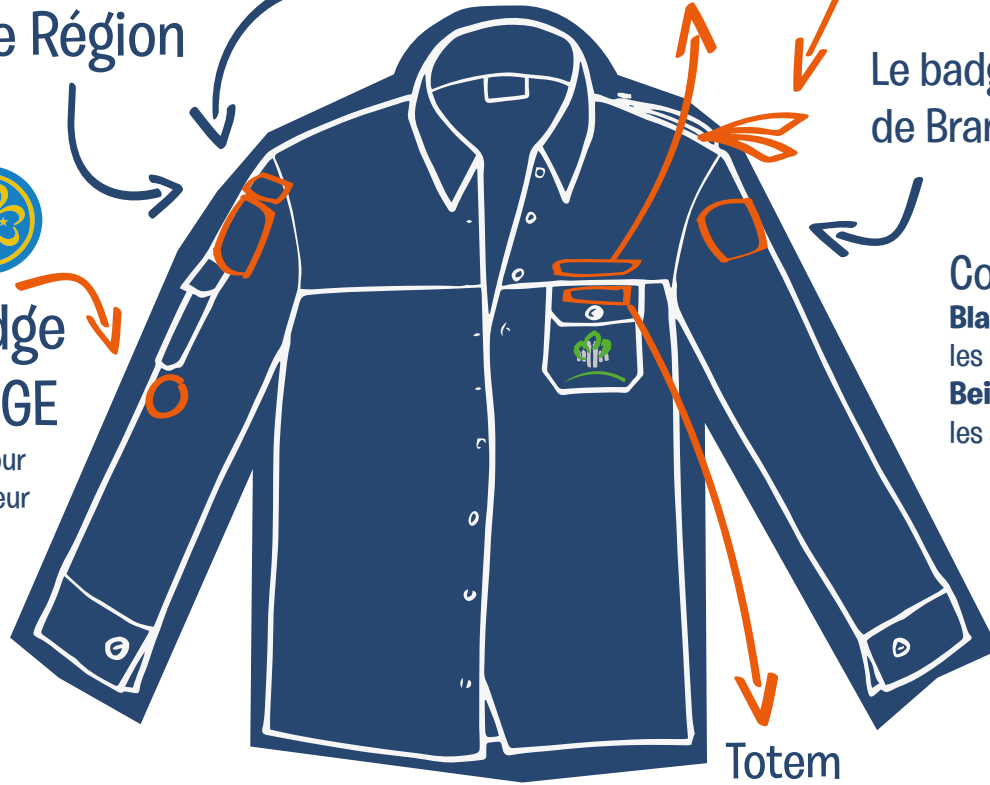
Barrette

Cordelière :
Blanche pour les responsables
Beige pour les autres

Sifflet



Badge AMGE
Si séjour extérieur



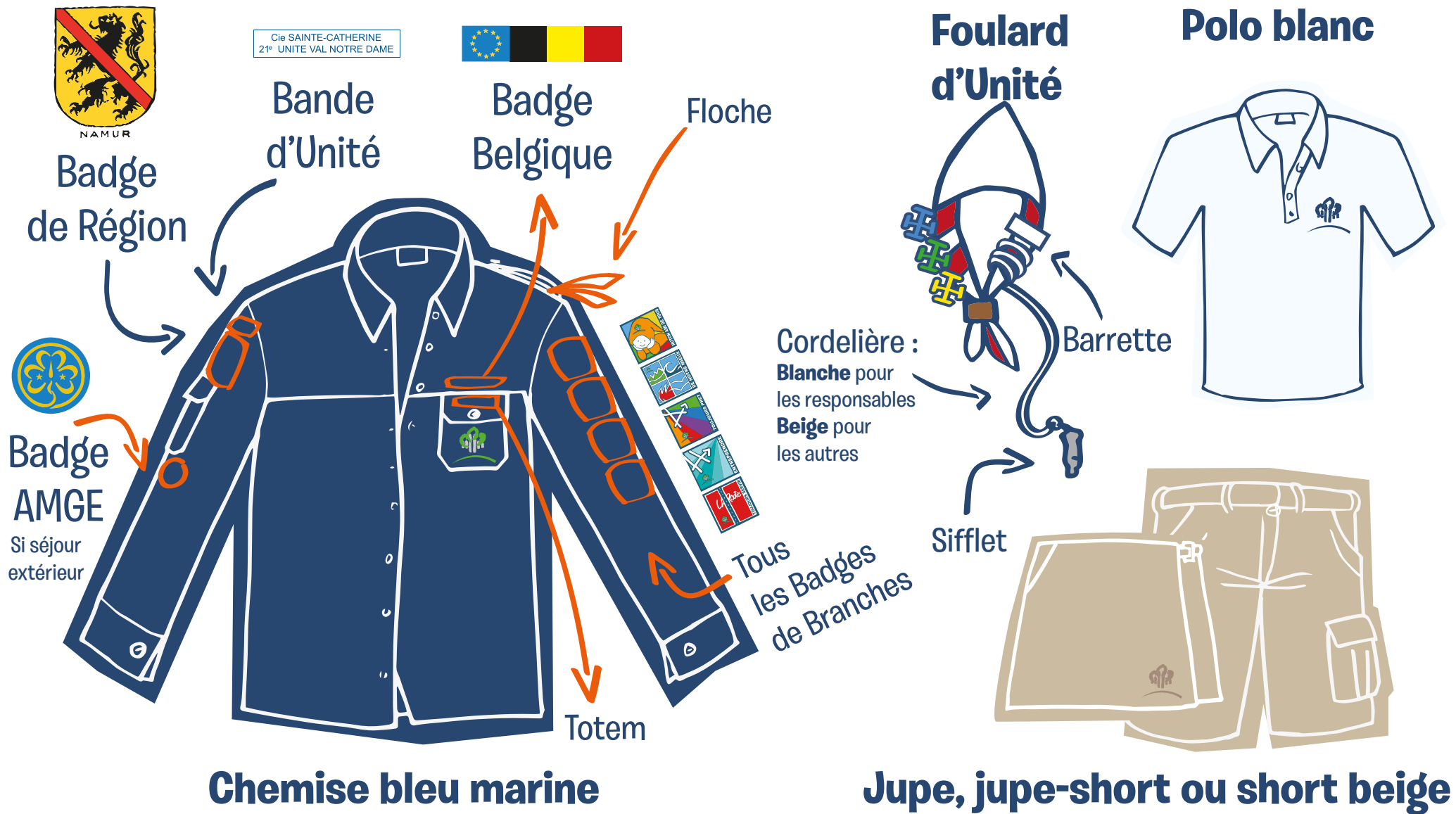
Totem

Chemise bleu marine

Jupe, jupe-short ou short beige



Animateur de groupe



Animateurs d'Unité

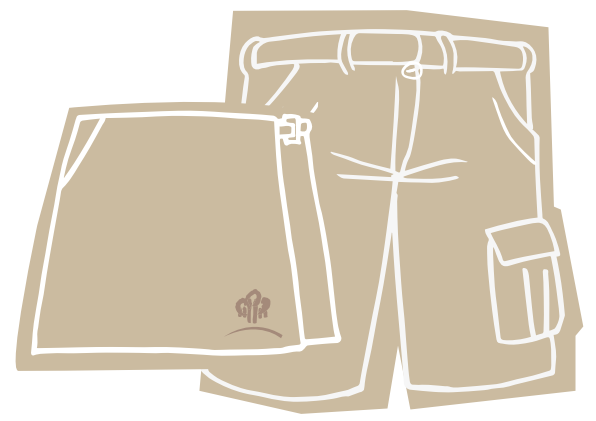


Chemise bleu marine

Foulard Cadre



Polo blanc



Jupe, jupe-short ou short beige